

DIMENSION4



UWB AngleID Sensor

Fact Sheet

OVERVIEW

The Ubisense DIMENSION4 AngleID® sensor detects tags entering and exiting up to eight, precisely defined zones in real-time. Using ultra-wideband (UWB) active tags, it determines the angle between the tag and the reader to maintain a track on the tag and report when it crosses user-defined thresholds.



SIMPLE SET UP

AngleID is designed to be installed and set up in less than 10 minutes. Simply mount the AngleID sensor and connect to a Windows® device to configure up to eight different zones per reader with a point-and-click interface. The sensor can then reliably detect the entry and exit of Dimension4 UWB tags in those zones up to 45m (150ft) away, even in highly metallic environments. The entry and exit events can then be integrated into an automation system or MES using either the OpenProtocol or .NET API communications interface.

Specifications

Dimensions & Weight:

IP30: 22cm x 15cm x 6cm (8.7" x 5.9" x 2.4"), 720g (25.4 oz)

IP54: 22cm x 15cm x 10cm (8.7" x 5.9" x 3.9"), 864g (30.5 oz)

IP69K: 22cm x 15cm x 9cm (8.7" x 5.9" x 3.5"), 1014g (35.8 oz)

Field of View:

+/-80° in azimuth, +/-40° in elevation

Range:

45m (150 feet)

Temperature:

-40°C to 65°C (-40°F to 149°F)

Humidity:

0 to 95%, non-condensing

Enclosure:

ABS/PC (V0), UV Stabilized

Tested to protection level IP30 / IP54 / IP69K

Connectors:

RJ45, Power-over-Ethernet IEEE 802.3af-compatible

Communications protocols:

OpenProtocol, .NET API

Power Usage:

Budget 15.4W per unit at the switch

Radio frequencies:

Ultra-wideband channel: 6-7GHz

Certifications:

US: FCC Part 15

Canada: ISSED

EU: CE

UK: UKCA

Mounting options:

Adjustable mounting bracket (supplied)

Safety Cable (supplied)

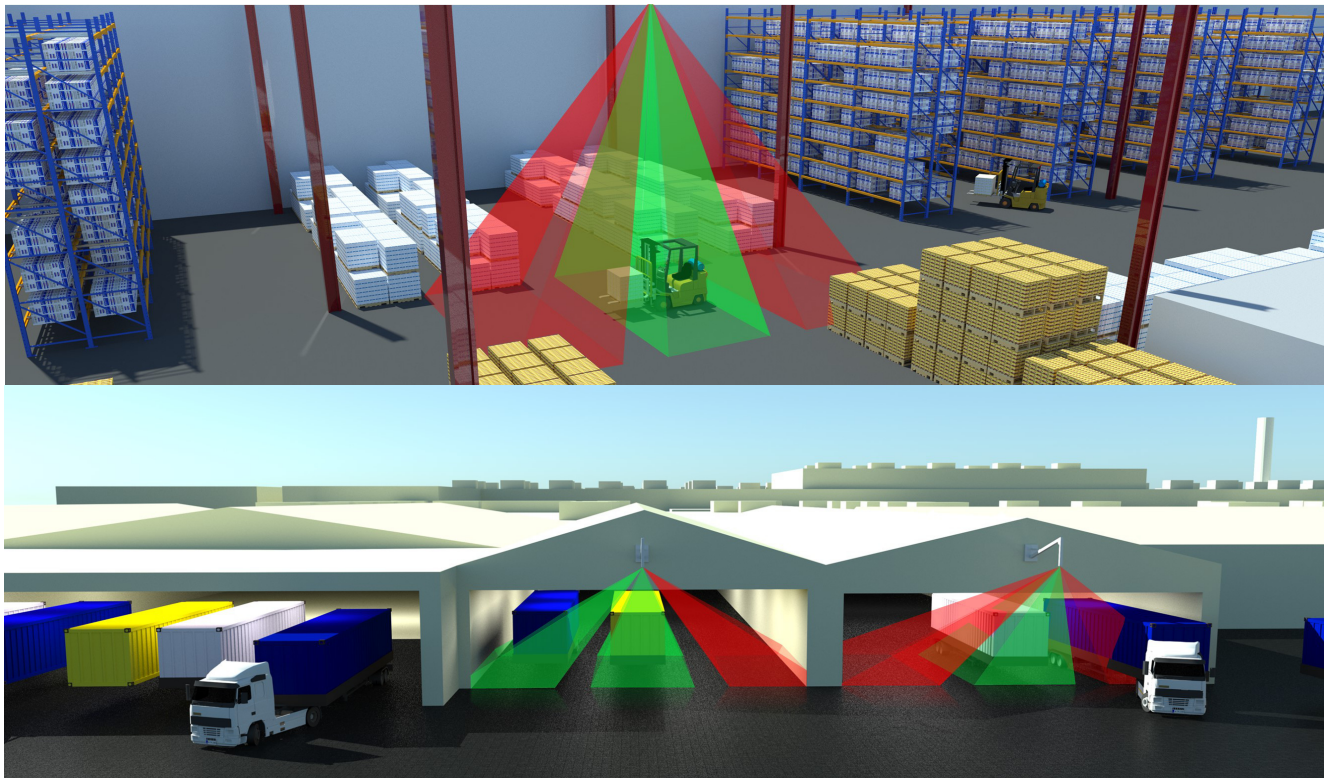
Ubisense part codes:

ANGLEIDSENSOR (IP30 sensor)

D4IP54UPGRADE (IP54 upgrade)

D4IP69KUPGRADE-S (IP69K upgrade, single port)

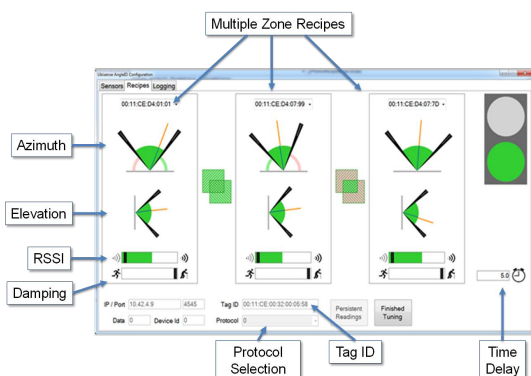
D4IP69KUPGRADE (IP69K upgrade, three port)



PRECISE ZONE DEFINITION

A point-and-click user interface allows rapid configuration of each zone:

- Azimuth and elevation of a zone
- Strength of signal (RSSI) filter
- Reading dampening factor
- Select communication protocol
- Set timeout duration
- Coordinate multi-sensor installations
- Set up data logging



MANY USE CASES

Ubisense AngleID has many benefits for a wide variety of industries, such as manufacturing, logistics, and transit, including:

Wireless Tool Tether

Determine if a handheld tool is being used in the correct workstation or zone

Work Stage Verification

Check that a particular work step has been completed or measure how long a product has been in station

Traffic Light or Secure Barrier Activation

Determine when a vehicle has approached a traffic light zone or controlled barrier

Direction of Movement

Measure the direction of travel of a forklift or AGV through a doorway or checkpoint

Tool and Worker Verification

Record which tools and workers were working on a specific product

Dock Door Presence

Track vehicles present at multiple dock doors with a single reader



To find out more, contact us on:

US +1 720 217 4397 UK +44 1223 53 5170
DE +49 211 229733-0 FR +33 1 83 79 06 82

www.ubisense.com

©2022 Ubisense. All Rights Reserved

Ubisense reserves the right to change technical specifications without prior notice.